



27 CARDIFF STREET, ABERDARE, CF44 7DP

TEL: 01685 878000 FAX: 01685 878000



Trewaun

Hirwaun, Aberdare, CF44 9HN

£189,995



Situated in Trewaun, Hirwaun, Aberdare, this delightful semi-detached house offers a perfect blend of modern living and convenience. With three generous bedrooms, this property is ideal for families or those seeking extra space. The well-designed layout features two inviting reception rooms, providing ample room for relaxation and entertaining guests.

The modern design of the home ensures a comfortable and stylish atmosphere throughout. The bathroom is well-appointed, catering to the needs of the household with ease. One of the standout features of this property is the off-road parking, accommodating up to two vehicles, which is a significant advantage in today's busy world.

The location is excellent, with easy access to local amenities, making daily errands and leisure activities a breeze. Additionally, the property boasts a substantial summerhouse, which presents a fantastic opportunity for various uses, whether as a home office, a playroom, or a creative space.

This semi-detached house in Trewaun is not just a home; it is a lifestyle choice that combines comfort, space, and convenience in a sought-after area. Do not miss the chance to make this wonderful property your own.



Entrance Hall

UPVC double glazed door to front. Radiator.

Living Room 19'03 x 14'11 (5.87m x 4.55m)

UPVC double glazed window to front. Radiator. Wall mounted electric fire.

Dining Area 19'03 x 14'11 (5.87m x 4.55m)

UPVC double glazed window to front. Radiator.

Kitchen 9'06 x 7'09 (2.90m x 2.36m)

UPVC double glazed window to side. Integrated fridge/freezer. Electric oven. Gas hob.

Bathroom 7'11 x 5'06 (2.41m x 1.68m)

UPVC double glazed window to rear. Bath with shower. Vanity handwash basin. W.C.

Utility Room

With power and light.

Porch

Porch to rear with UPVC double glazed door with access to garden.

Landing

UPVC double glazed window to rear. Attic trap.

Bedroom 1 11'11 x 8'02 (3.63m x 2.49m)

UPVC double glazed window to rear. Radiator.

Bedroom 2 11'02 x 10'07 (3.40m x 3.23m)

UPVC double glazed window to front. Radiator.

Bedroom 3 10'09 x 6'09 (3.28m x 2.06m)

UPVC double glazed window to front. Radiator.

Outside

Block paving to front. Off-road parking. Summerhouse with power and light and additional storage. Outside tap. Patio area.

Disclaimer

N.B Whilst these particulars are intended to give a fair description of the property concerned, their accuracy is not guaranteed and any intending purchaser must satisfy himself by inspection or otherwise, as to the correctness of statements contained herein.

The particulars do not constitute an offer or contract, and statements herein are made without responsibility, or warranty on the part of the Vendor or Manning Estate Agents, neither of whom can hold themselves responsible for expenses incurred should the property no longer be available. Items shown in photographs are NOT included unless specifically mentioned in particulars. They may however be available by separate negotiation.

The Property Misdescription Act 1991

The Agent has not tested any apparatus, equipment, fixtures and fittings or services and so cannot verify that they are in working order or fit for the purpose. A buyer is advised to obtain verification from their Solicitor or Surveyor. References to the Tenure of the property are based on information supplied by the seller. The Agent has not sight of the title documents. A Buyer is advised to obtain verification from their Solicitor.

You may download, store and use the material for your own personal use and research. You may not republish, retransmit, redistribute or otherwise make the material available to any party or make the same available on any website

These particulars, whilst believed to be accurate are set out as a general outline only for guidance and do not constitute any part of an offer or contract. Intending purchasers should not rely on them as statements of representation of fact, but must satisfy themselves by inspection or otherwise as to their accuracy. No person in this firms employment has the authority to make or give any representation or warranty in respect of the property.

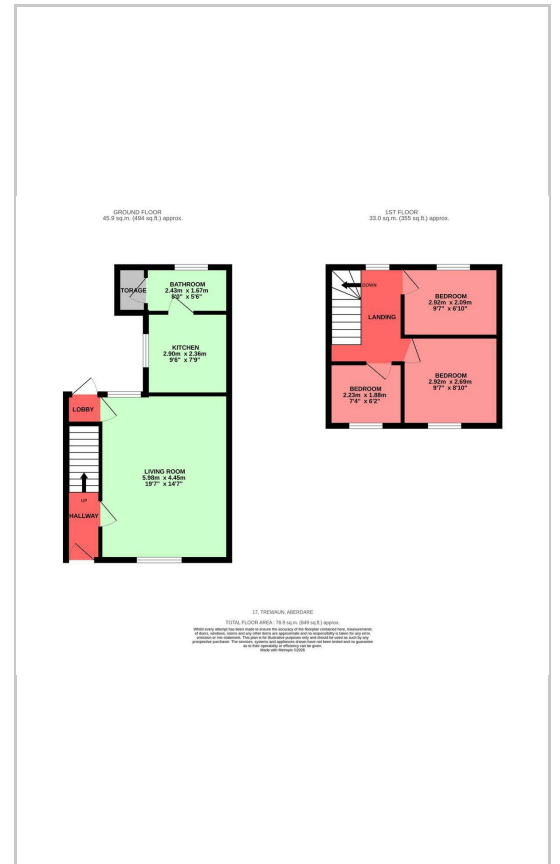
27 Cardiff Street, Aberdare, CF44 7DP

Tel: 01685 878000 Email: info@manningestateagents.co.uk https://www.manningestateagents.co.uk

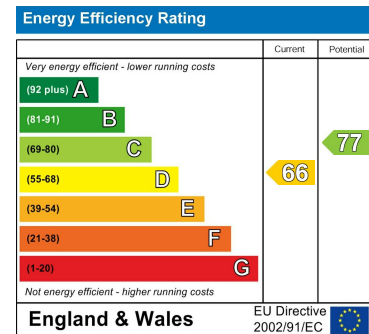
Area Map



Floor Plans



Energy Efficiency Graph



27 Cardiff Street, Aberdare, CF44 7DP

Tel: 01685 878000 Email: info@manningestateagents.co.uk https://www.manningestateagents.co.uk